

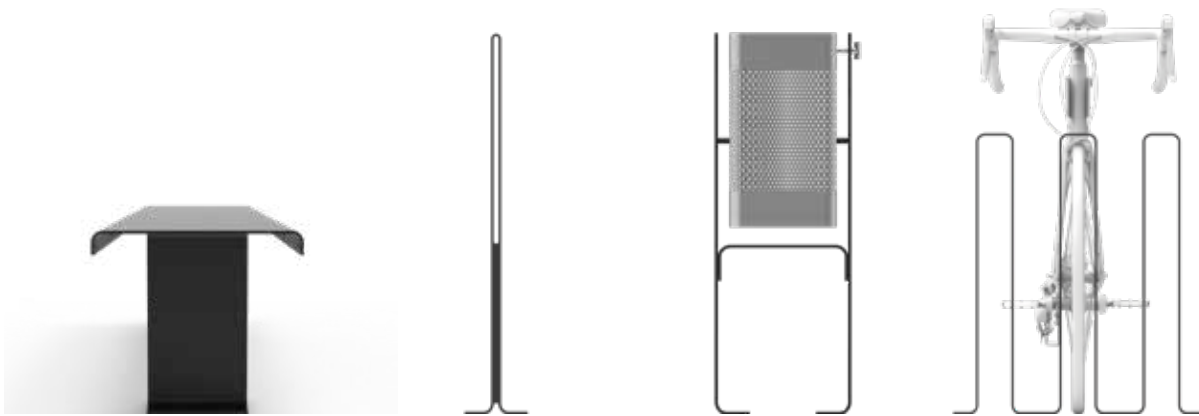


SIAM

SIAM URBAN FURNITURE PRODUCT LINE

Consultation, Design Services, Engineering, Fabrication, Installation.

www.sd-ind.com | sales@sd-ind.com | 212-348-8000



SIAM

01

SIAM

STRENGTH IN SIMPLICITY

The Siam line brings a sculptural edge to urban space, blending fluid geometry with robust steel fabrication. Each piece—from benches to bins—is built from continuous steel profiles, bent and folded with precision. The result is a lightweight visual language supported by a solid structural core. Siam speaks in curves, sharp lines, and industrial strength.

Key Features:

Unified Aesthetic Language:

All elements share a continuous loop design, formed from a single sheet of laser-cut and bent steel. This approach ensures design coherence and streamlines production.

Precision Manufacturing:

Components are CNC-cut and cold-formed to exact tolerances. The result is a clean, seamless look with tight fit between parts.

Heavy-Duty Finishing:

Powder-coated matte black steel ensures outdoor durability, resistance to corrosion, and low maintenance.

Flexible Installation:

Most units use baseplates with anchor holes for secure

surface mounting on concrete or modular pavements.

Minimal Visual Impact:

While structurally strong, Siam elements maintain a minimal profile—ideal for visually uncluttered environments.

Modular Integration:

Bike racks, trash bins, and benches can be freely combined in clusters or lines, adjusting to site-specific needs.



SIAM BENCH

STEEL COMFORT, STRUCTURAL SIMPLICITY

The Siam Bench combines industrial strength with sculpted ergonomics. Crafted from folded steel profiles and supported by I-beam inspired legs, it offers clean geometry and uncompromising performance. Its subtle curve provides comfort while the continuous silhouette enhances public space design with minimal material use.



SIAM BENCH

STEEL COMFORT, STRUCTURAL SIMPLICITY

Key Features

Folded Steel Profile:

The bench is made from a single steel sheet precisely bent into ergonomic form, balancing rigidity with lightweight fabrication.

I-Beam Support Legs:

Structural legs use standard steel profiles, ensuring durability, load resistance, and ease of production using standard fabrication techniques.

Modular Construction:

Available in backless and backrest variants, the system allows for layout flexibility while maintaining a consistent aesthetic language.

Efficient Drainage and Cleanability:

The sloped surface design and open underside prevent water accumulation and simplify urban maintenance routines.

Vandal-Resistant Finish:

Coated with electrostatic powder paint in matte black, the surface resists scratches, graffiti, and corrosion in high-traffic areas.

Anchoring System:

Designed for secure anchoring through steel base plates, the bench ensures safe installation over hard urban surfaces.



SIAM BENCH TYPE B

03

SIAM BIN

BUILT TO LAST, DESIGNED TO STAND OUT

The Siam Bin is a high-performance outdoor waste container designed with clarity and structure in mind. Its distinctive square perforated body contrasts elegantly with the robust black steel frame, creating a timeless industrial presence. Every detail is optimized for functionality, easy maintenance, and visual harmony with the rest of the Siam collection.

Key Features

Solid Frame, Light Appearance:

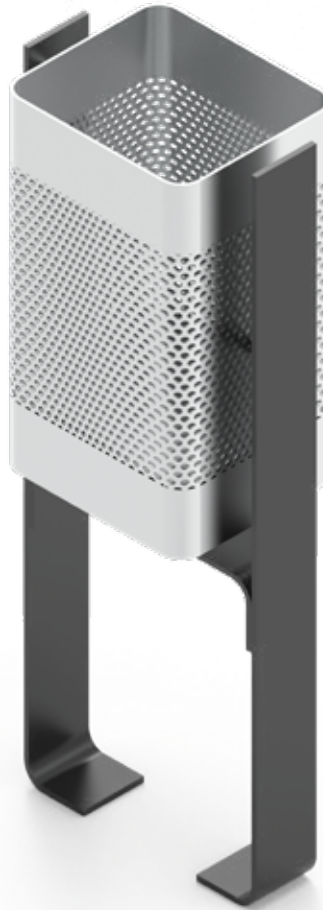
Crafted from laser-cut steel sheet, the structure is bent and welded with precision. The matte finish on the support contrasts with the satin aluminum body for a clean, modern aesthetic.

Removable Container:

The bin features a perforated stainless body with a subtle bottom lip and a rear-locked hinge. This allows effortless removal for emptying while keeping it secured when in place.

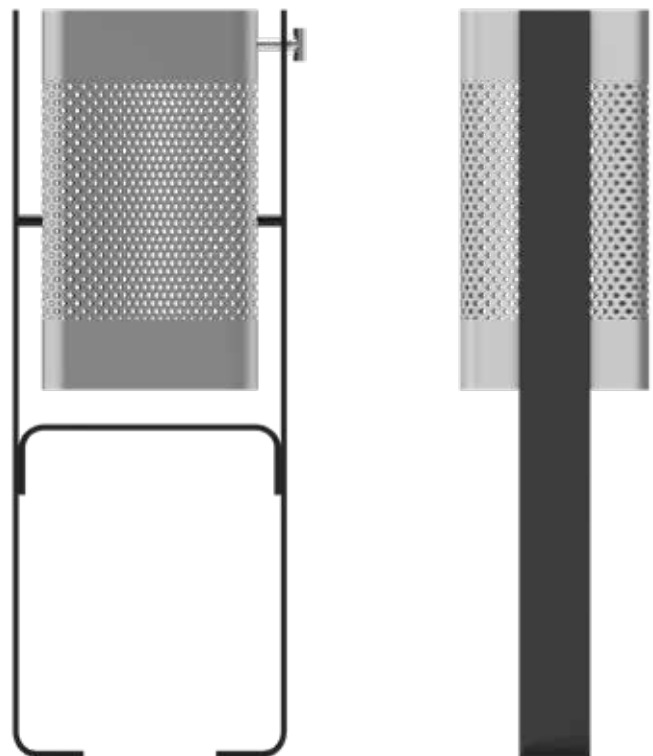
Modular Match:

Engineered to align with the proportions and anchoring system of other Siam elements—bench, bike rack, and bollard—for seamless spatial integration in any urban setting.



SIAM TRASH BIN

04



SIAM BIKE RACK

SECURITY WITH PRESENCE

The Siam bike rack reinterprets urban functionality with a strong visual statement. Its folded steel body forms a continuous, upright loop that supports and secures bikes with clean geometry and minimal bulk. Built from a single metal sheet and mounted flush to the ground, the rack blends seamlessly into its environment while offering reliable daily use.

Key Features

Monolithic Construction:

Made from one folded steel plate, reducing welds and joints for a cleaner finish and higher durability.

Multi-Point Locking:

Allows users to secure both frame and wheel for added protection against theft.

Scalable Alignment:

Units can be installed in series, maintaining visual consistency while accommodating multiple bikes.

Weatherproof Finish:

Powder-coated steel surface resists rust and wear in harsh outdoor conditions.

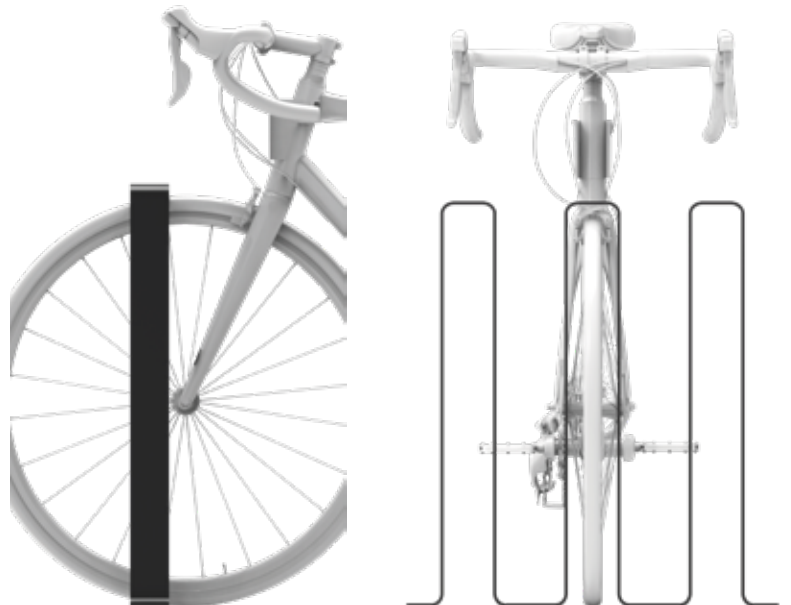
Slim Footprint:

Designed to maximize bike density while keeping circulation space open.



SIAM BIKE RACK

05



SIAM BOLLARD

SLIM DESIGN, STRONG PRESENCE

The Siam Bollard blends minimalism with resilience. Made from precision-formed steel and finished with a matte powder coat, it defines boundaries without interrupting the urban landscape. The built-in lighting strip enhances nighttime visibility and safety while reinforcing its elegant form.

Key Features

Integral Light Line:

A seamless vertical LED strip offers soft, uniform illumination that enhances pedestrian visibility without glare.

Robust Steel Construction:

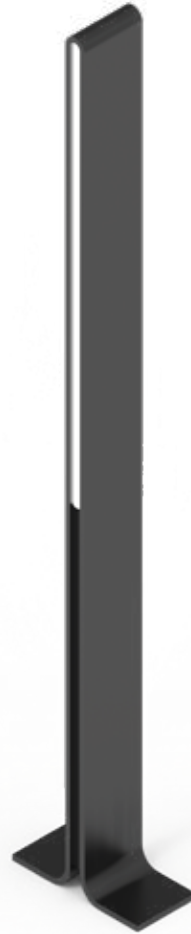
The body is laser-cut and folded from thick-gauge steel, providing rigidity and long-term durability in demanding urban conditions.

Clean Fastening Footprint:

Anchored by twin base plates for easy surface installation, it ensures a solid stance while keeping the visual language refined.

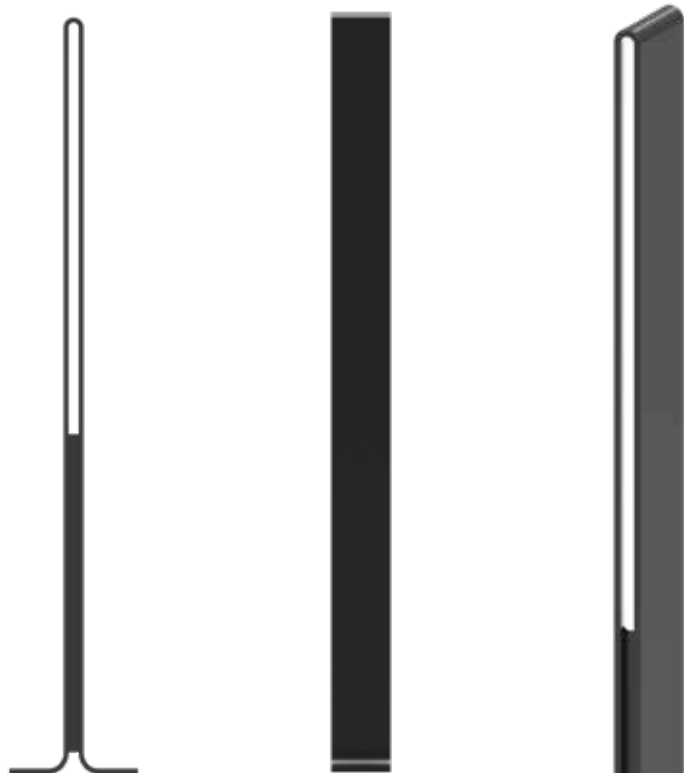
Nighttime Wayfinding:

The illuminated profile functions as a spatial marker, guiding circulation in parks, plazas, and sidewalks after dark.



SIAM BOLLARD

06





SDI SIAM URBAN FURNITURE PRODUCT LINE

CONTACT

HEADQUARTERS

250 Pehle Ave, Ste 200, Saddle Brook, NJ 07663

FACTORY

213 Porter Rd, Conroe, TX 77301



www.sd-ind.com



sales@sd-ind.com



212-348-8000