



## **WELCOME TO OUR STATE-OF-THE-ART FACTORY IN TEXAS**

YOUR ONE-STOP SOLUTION FOR FABRICATION EXCELLENCE

### **CATALOG**

#### **CERTIFICATIONS**

Member of AISC | AISC Certified | Member of AWS |  
HUB - TxCPA | DBE/ACDBE - PANYNJ | MBE - PANYNJ |  
SBE - PANYNJ | DBE/ACDBE - TxDOT | SBE - TxDOT |  
DBE/ACDBE - Caltrans | MBE - NYC SBS | NJPW Contractor |  
MBE - NYC SCA | Cage Code - SBA



[www.sd-ind.com](http://www.sd-ind.com)  
212-348-8000  
[sales@sd-ind.com](mailto:sales@sd-ind.com)

# CONTENTS

**04** Welcome to SD Industries

**06** About The Factory

**08** Machine & Technology

**09** Our Expertise

**10** Production Process

**15** Quality Assurance

**16** Industries We Serve



**Metal | Signage | Glass**

© Copyright SD Industries | Printed 2026 | Version 1.0

# Welcome To SD Industries, Texas Shop

**Crafting Brilliance in Metal, Signage, and Glass.**

SD Industries is a trusted name in the world of fabrication, known for delivering precision-engineered solutions across metal, signage, and glass industries. We combine cutting-edge technology, unparalleled craftsmanship, and a customer-first approach to bring bold ideas to life.

Founded on the principles of innovation and quality, we have built a reputation for excellence in creating bespoke fabrication solutions tailored to diverse industries, including construction, retail, hospitality, and industrial applications.



## Our Vision

To become a global leader in the fabrication industry by setting benchmarks in quality, innovation, and sustainability.

## Our Mission

To provide industry-leading fabrication solutions that exceed client expectations and contribute to creating functional and aesthetic products.

## Core Values

- ✓ Quality: No compromise on precision and excellence.
- ✓ Innovation: Always embracing the latest technologies and trends.
- ✓ Customer Satisfaction: Understanding and exceeding client needs.
- ✓ Sustainability: Reducing waste and adopting eco-friendly practices.

[www.sd-ind.com](http://www.sd-ind.com) | [sales@sd-ind.com](mailto:sales@sd-ind.com) | 212-348-8000



# About the Factory

## About Our Factory: Precision in Every Corner

Our factory in Houston spans over 50,000 square feet and is designed to handle complex and large-scale fabrication projects with unmatched precision. Strategically located to serve a diverse clientele, our facility integrates advanced machinery with streamlined processes to ensure efficiency and quality.



**Dedicated Areas:** Separate zones for cutting, welding, painting, and assembly.



**Skilled Workforce:** Certified technicians and engineers with extensive experience.



**Custom Fabrication:** Flexible production lines for tailored solutions.



**Capacity:** Capable of handling high-volume orders without compromising quality.

# Machinery & Technology: The Backbone of Our Operations

Our success is built on the foundation of cutting-edge technology and machinery. Detailed below are our core equipment and capabilities:



01 | Tube Laser



02 | Flat Laser



03 | Press Brake



04 | Laser Welder



05 | MIG Welding



06 | TIG Welding



07 | Gang Band Saw



08 | Iron Worker



09 | Tube Sanding

# Our Expertise

Our team excels in:

- ✓ **Custom Metal Fabrication:** Tailored solutions for unique designs and requirements.
- ✓ **Complex Assemblies:** Managing multi-component projects with precision.
- ✓ **Client Collaboration:** Partnering closely with clients to meet specific needs.
- ✓ **Innovative Problem Solving:** Utilizing advanced engineering techniques to overcome challenges.

[www.sd-ind.com](http://www.sd-ind.com) | [sales@sd-ind.com](mailto:sales@sd-ind.com) | 212-348-8000



# Production Process

## 01 | Design & Planning

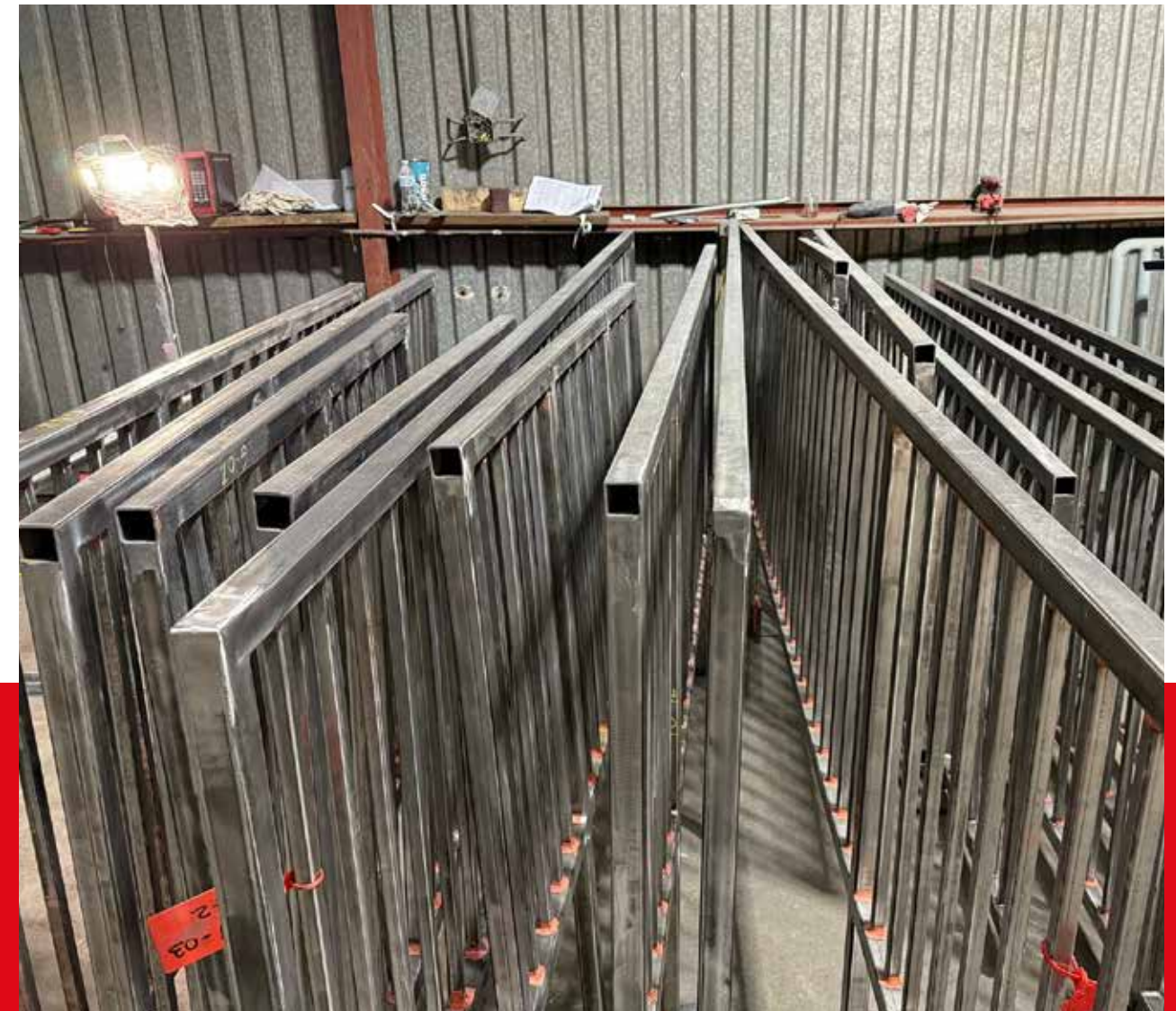
- ✓ Client Input: Initial consultation to understand requirements.
- ✓ CAD Modeling: Detailed 3D designs for visualization and accuracy.
- ✓ Feasibility Analysis: Ensuring designs align with material and machine capabilities.



## 02 | Material Procurement

- ✓ Sourcing: Reliable suppliers for high-grade raw materials.
- ✓ Inventory Management: Ensuring materials are readily available for production schedules.

[www.sd-ind.com](http://www.sd-ind.com) | [sales@sd-ind.com](mailto:sales@sd-ind.com) | 212-348-8000



### 03 | Fabrication

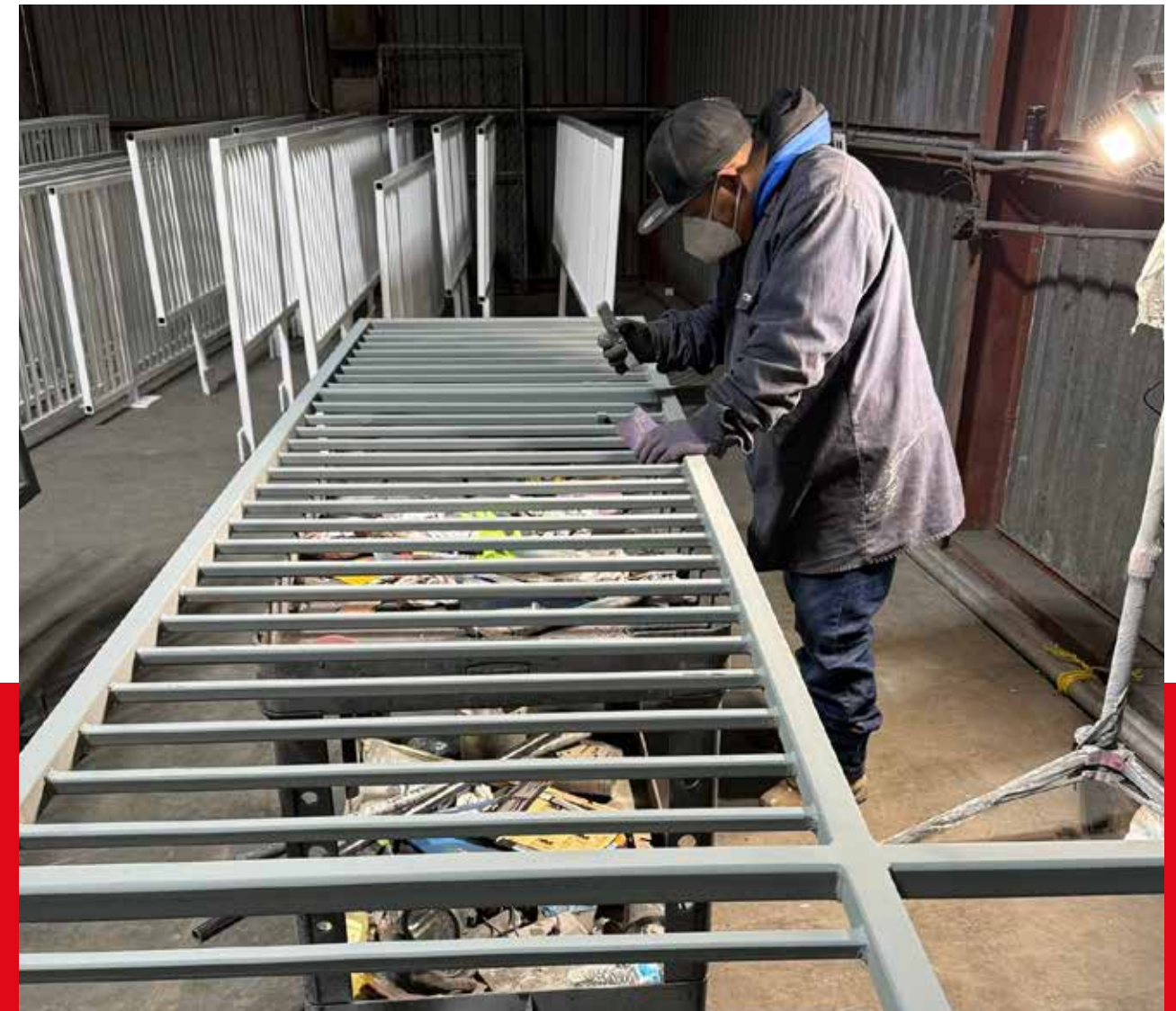
- ✓ **Cutting:** Laser and plasma cutting for precision.
- ✓ **Forming:** Bending and shaping using advanced machinery.
- ✓ **Assembly:** Combining components with meticulous attention to detail.



### 04 | Quality Assurance

- ✓ **Inspections:** Multi-stage checks during and after fabrication.
- ✓ **Testing:** Strength, durability, and finish tests as required.
- ✓ **Certifications:** Compliance with industry and client-specific standards.

[www.sd-ind.com](http://www.sd-ind.com) | [sales@sd-ind.com](mailto:sales@sd-ind.com) | 212-348-8000



## 05 | Delivery & Installation

- ✓ Logistics: Timely and secure delivery to project sites.
- ✓ Installation: Expert teams for on-site assembly and finishing.



## Quality Assurance

- ✓ Standards: ISO and AISC Standards & Certifications in process
- ✓ Inspection Tools: Advanced measuring equipment for accuracy verification.
- ✓ Traceability: Full documentation of materials and processes.
- ✓ Continuous Improvement: Ongoing training and audits to maintain excellence.

[www.sd-ind.com](http://www.sd-ind.com) | [sales@sd-ind.com](mailto:sales@sd-ind.com) | 212-348-8000



# Industries We Serve

We cater to diverse industries, including:



**Construction:** Structural components and architectural features.



**Automotive:** Frames, panels, and precision parts.



**Oil and Gas:** Pipeline supports and industrial equipment.



**Consumer Goods:** Durable and aesthetically pleasing metal products.



**Aerospace:** Lightweight and high-strength components.



**Renewable Energy:** Wind turbine parts and solar panel frames.



**Defense:** Custom metalwork for secure applications.



**YOU IMAGINE. WE BUILD.**

Scope	Master Format Code	NAICS Code
Guardrails & Handrails	05 52 00	332323
Bollards	32 39 00	332323
Canopies	10 73 13	332311
Fencing	32 31 00	332323
Gates	08 34 53	332323
Metal Staircases	05 51 00	332323
Stair Railings	05 52 13	332323
Bicycle Racks	12 93 13	332323
Cladding	07 42 13	332322
Roofing	07 41 13 & 07 53 23	332322 & 238160
Escalator & Elevator Enclosures	14 91 23	238290
Ticket Booths	13 41 13	332311
Wayfinding	10 14 23	339950
Sign Boxes	10 14 33	339950
Logos & Letters	10 14 43	339950
Directories	10 14 23	339950
Bulletin Boards	10 14 23	339950
Plaques	10 14 13	339950
ADA Signage	10 14 00	339950
Glass & Glazing	08 80 00	327215

**MASTER FORMAT & NAICS CODES**